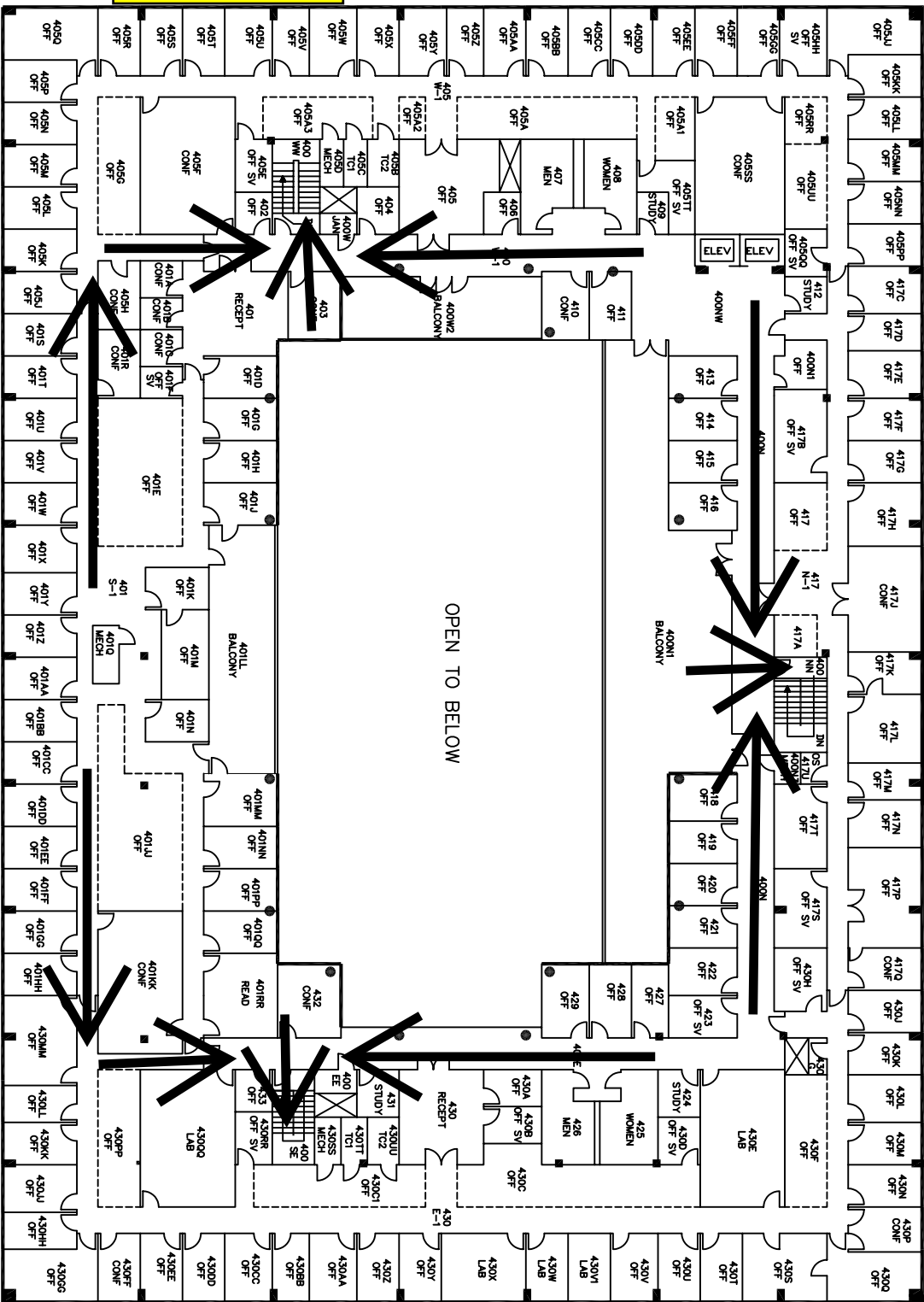


Go down to second floor, exit north side and move across the street.

Go down to first floor, exit west side, move away from building to underpass or department assembly point.



4

Go down to second floor, exit east side, move away from building.

SCALE
1" = 40'
4-17-2006



FOURTH FLOOR
GROSS AREA: 53,501 SF

updated 7/24/07

0' 10' 20' 40'