

Data Collection and Monitoring of Hydrologic and Meteorologic
Properties On and Near the Navajo Indian Reservation

U.S. Geological Survey

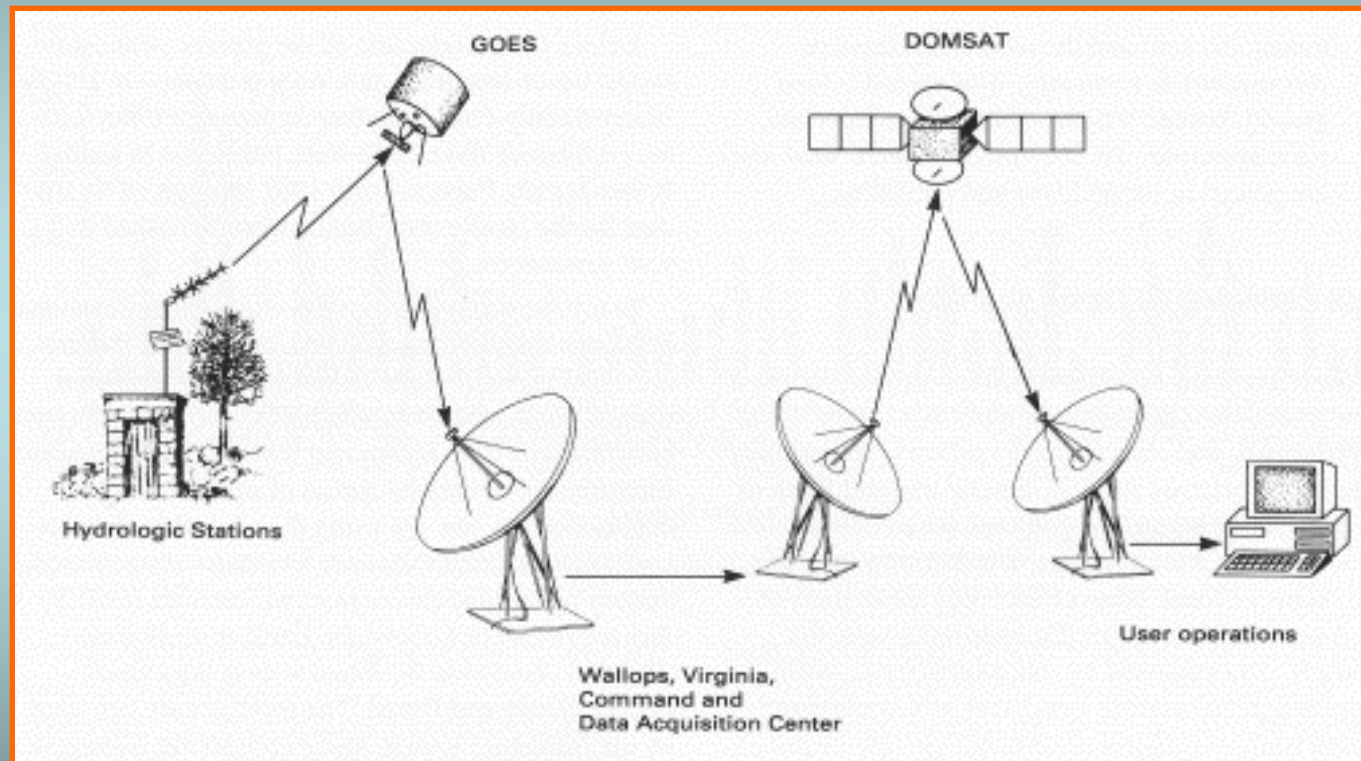
Navajo Nation Hydroclimatic Data Workshop
Flagstaff, Arizona
October 9, 2007



- 180 stations have telemetry.
- Data is recorded in 15 minute intervals.
- Data is transmitted on four hours intervals.
- Alert data can be sent in real-time.



Data Transmission



Governor's Drought Task Force

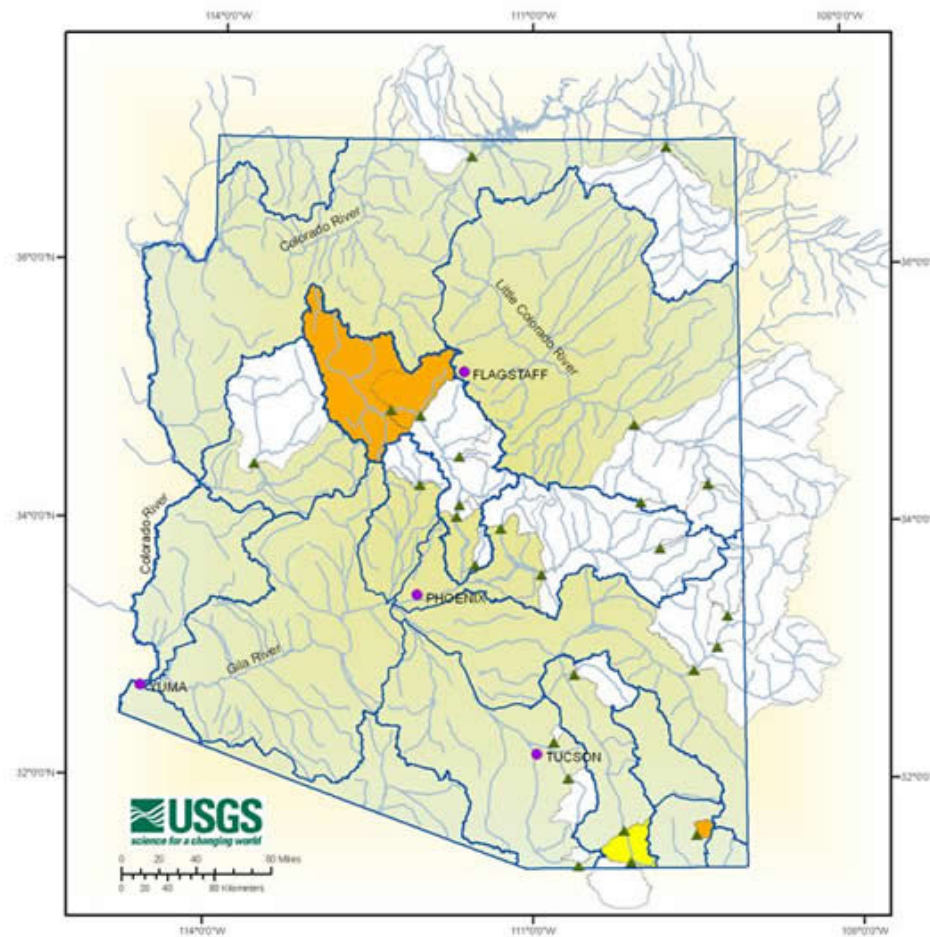
The USGS, in cooperation with the Governor's Drought Task Force, has developed a series of maps showing drought intensity for selected drainage basins in Arizona

<http://az.water.usgs.gov/droughtmaps/droughtmaps.htm>



Drought Levels Based on Monthly Streamflow Discharge

July 2007

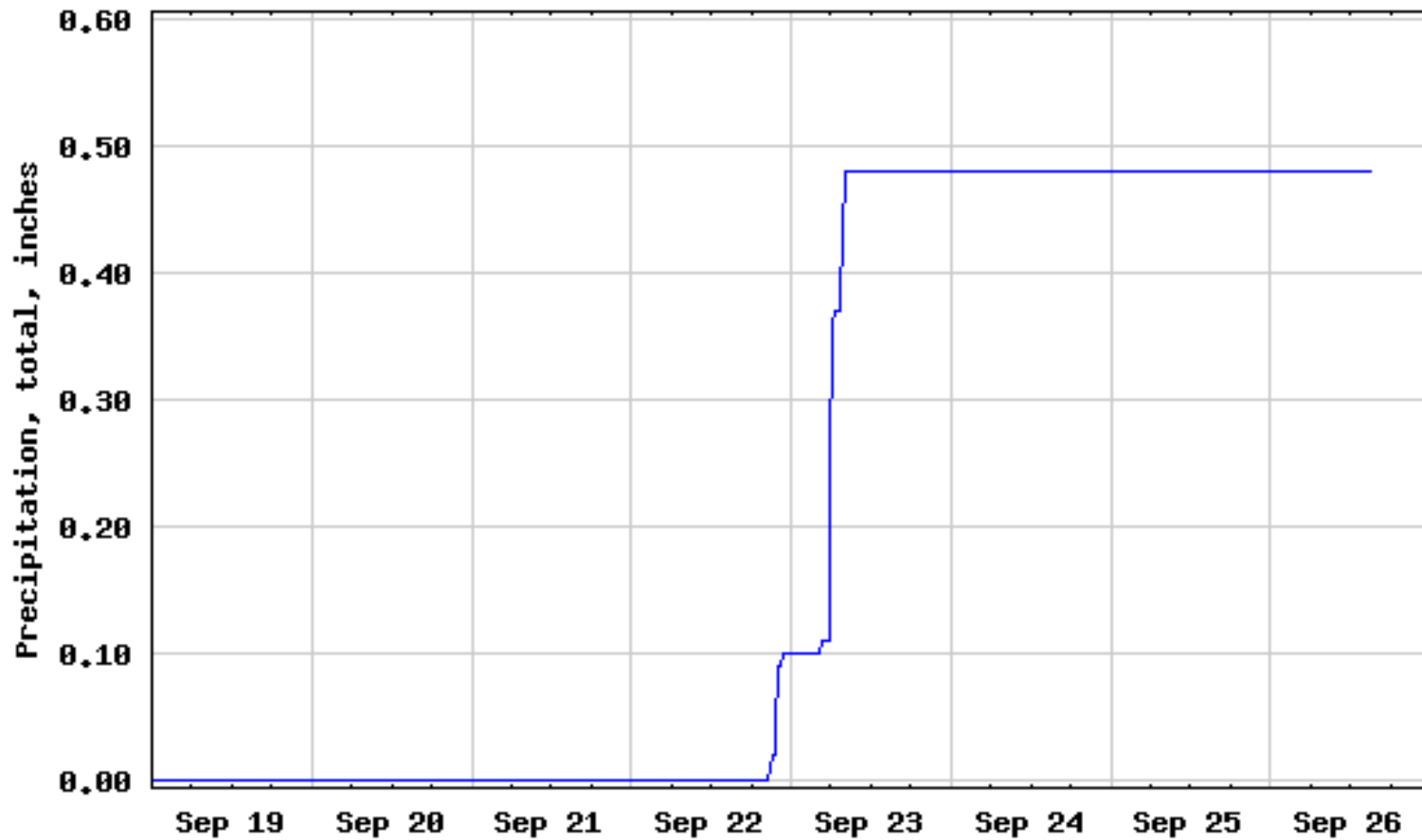


DROUGHT LEVEL	
Blue square	Data Unavailable
White square	No Drought
Yellow square	Abnormally Dry
Light Orange square	Moderate Drought
Orange square	Severe Drought
Red square	Extreme Drought

EXPLANATION	
Purple dot	Cities
Green triangle	Gages
Blue outline	Watershed Boundary



USGS 09379200 CHINLE CREEK NEAR MEXICAN WATER, AZ



---- Provisional Data Subject to Revision ----



<http://waterdata.usgs.gov/nwis/uv?09379200>



USGS WEB

- NWIS Web – Streamflow Data and much more

<http://waterdata.usgs.gov/az/nwis/current/?type=flow>

