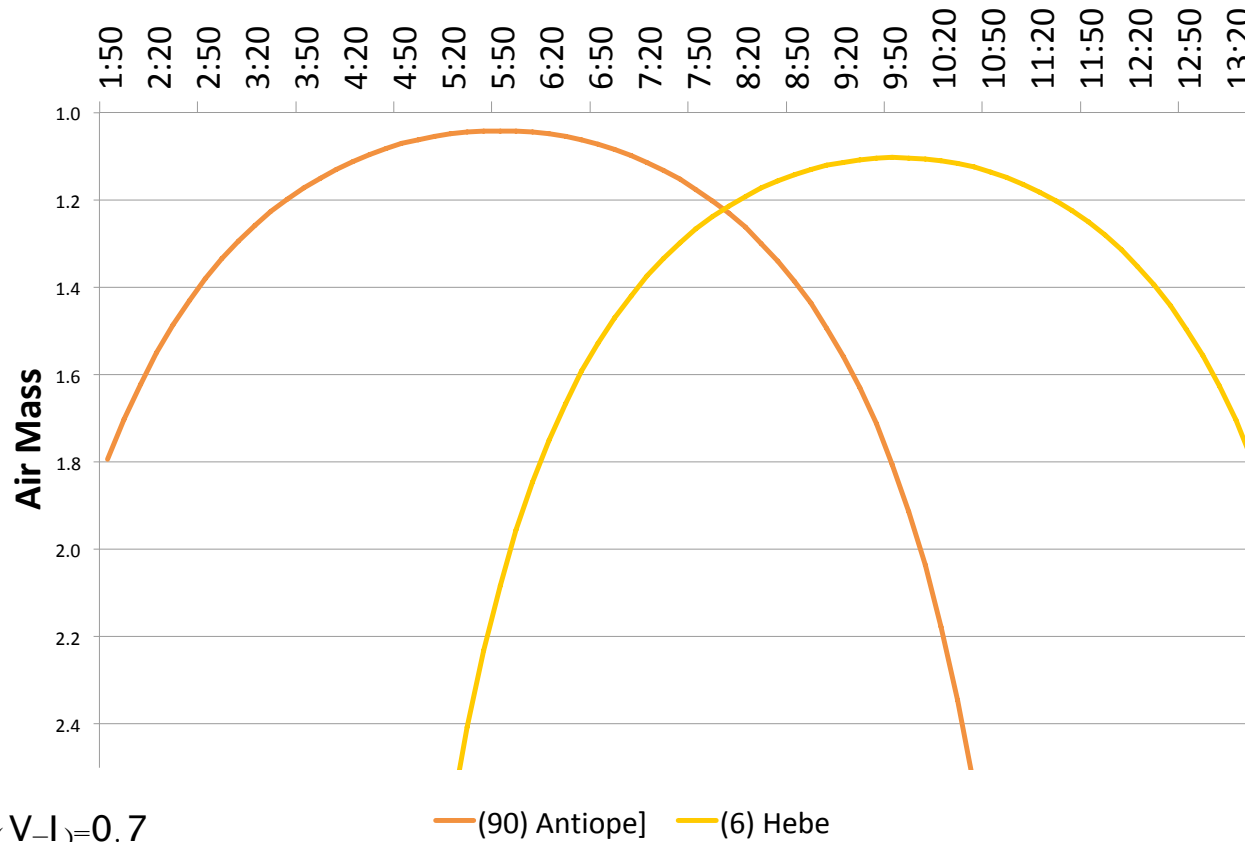


MBA for SOUL eng

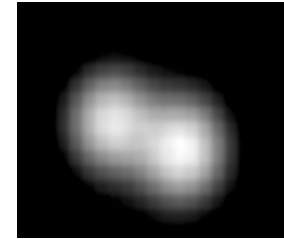
(v. 2.0 08mar2020)

11-mar-2020 UT -- (*) indicates satellite

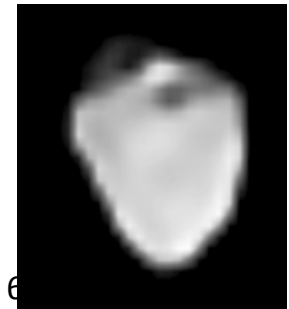


$(V-I)=0.7$

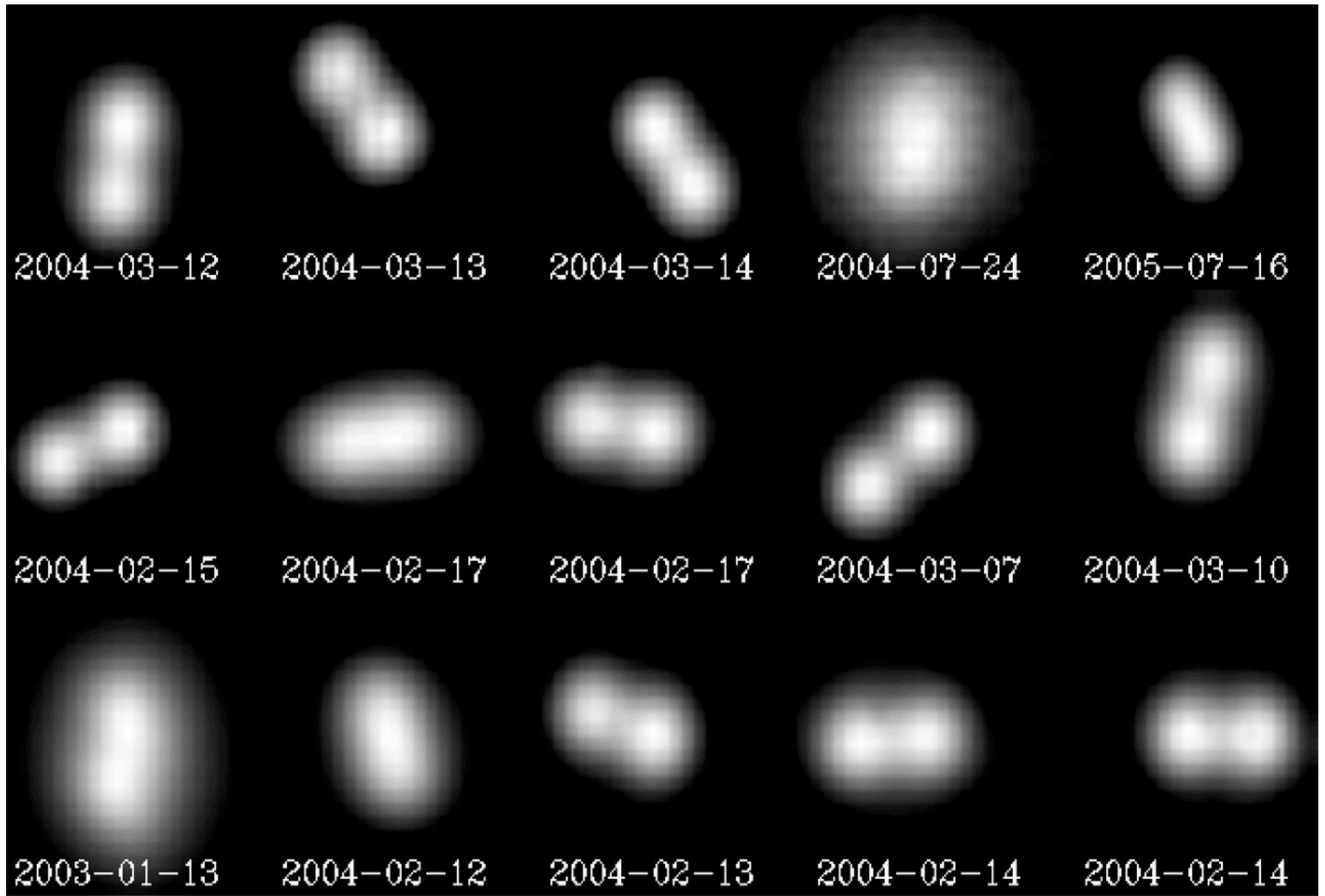
$(V-R)=0.35$

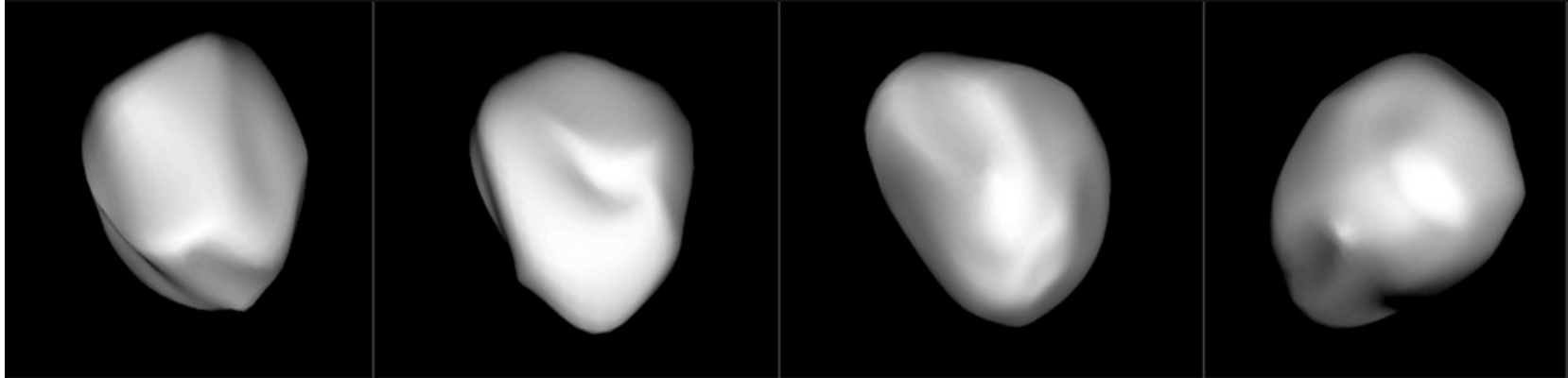


- (90) Antiope
 - vmag = 13.6
 - imag = 12.9
 - rmag = 13.3
 - $d\theta = \sim 60$ mas

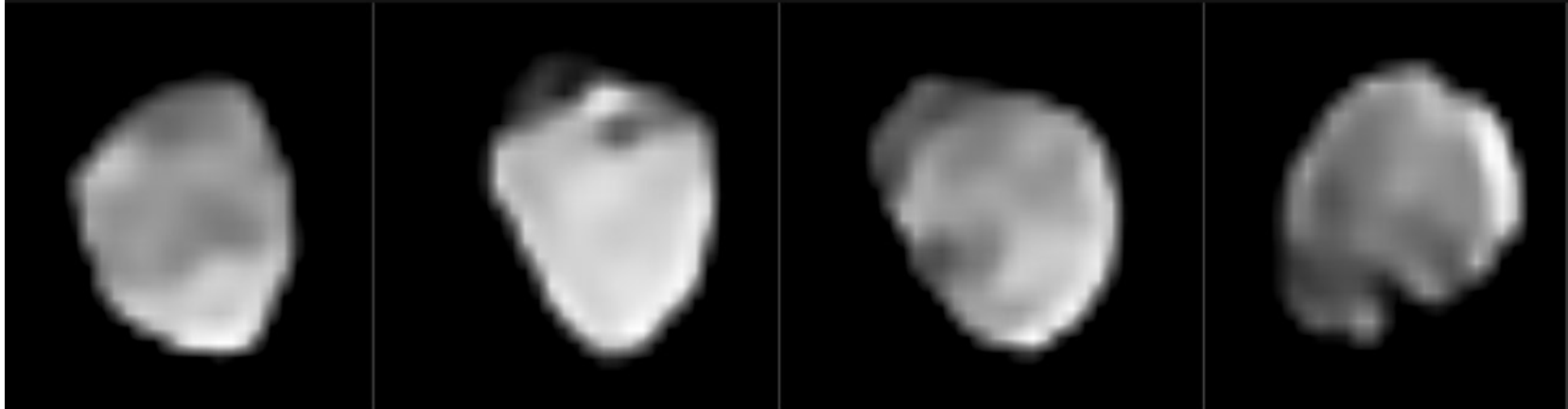


- (6) Hebe
 - vmag = 10.3
 - imag = 9.6
 - rmag = 9.9
 - $d\theta = 126$ mas





Simulations



Observations