



Macromedia Fireworks is used to edit and manipulate images for web design or basic image enhancement. This quick reference card serves as a guide to introduce novice users to program basics.

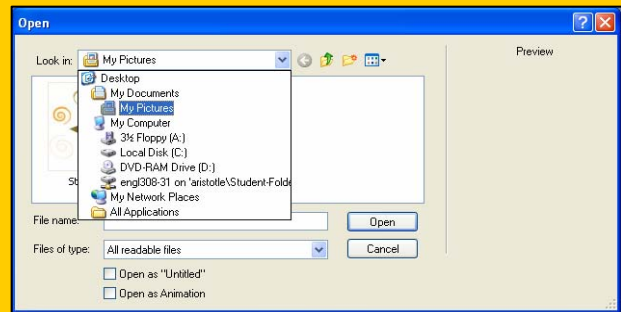
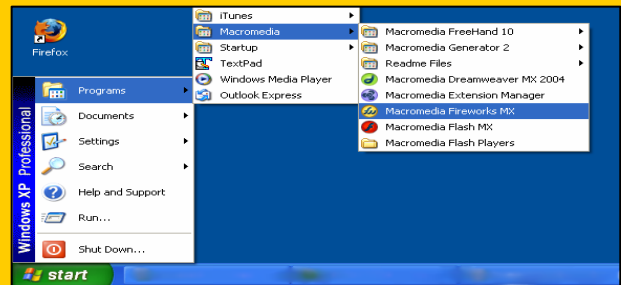
Import an Image

1. Go to start and select Programs.
2. Select Macromedia.
3. Select Macromedia Fireworks MX.

Fireworks opens.

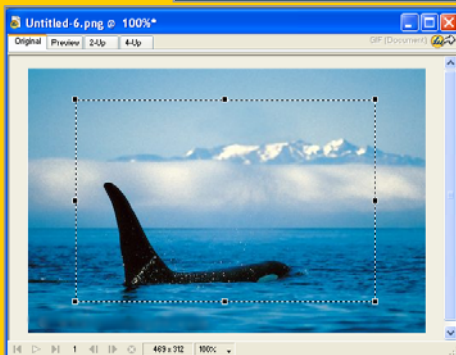
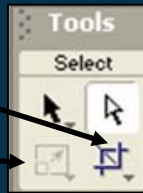
4. Go to File and select Open.
5. Find the file you wish to edit.
6. Select Open.

Your image is now displayed.



KEY # 1

Crop
Scale



Before cropping the image, notice the excess space.



After cropping the image, notice the image is smaller.

Crop/Expand

1. To Crop/Expand your image. Select the Crop Tool or Scale Tool in the toolbar.
2. Place the Crop/Scale cursor (refer to key #1 for proper icon) onto the image and select the section of the image you want to edit.

You have now selected the portion of the image you wish to edit.

3. Using the black squares at each corner of the cursor, you can adjust the size of your selection.
4. Press Enter on the Keyboard to Crop/Expand your selection.

If you have cropped your image, it omits the excess space. If you expanded your image, it is larger.

Brightness/Contrast & Color Balance

To adjust the Brightness and Contrast of your image or Color Balance, you will need a filter.

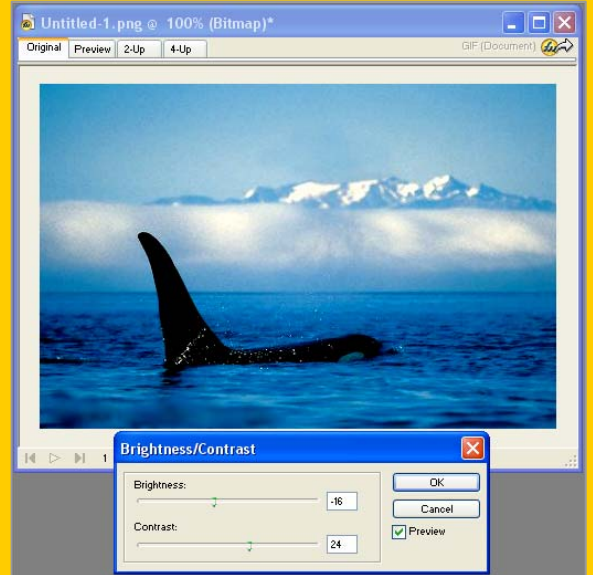
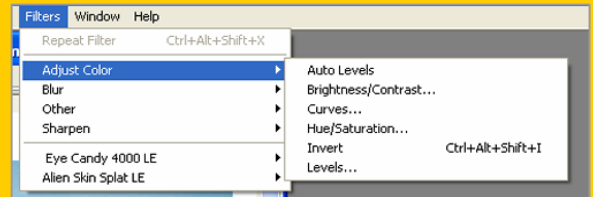
7. Select Filter Menu.
8. Move your cursor to the Adjust Color option.
9. Select either Brightness/Contrast or Auto Levels for Color Balance.

If you have selected Auto Levels, your image is automatically Color Balanced.

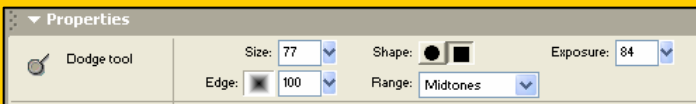
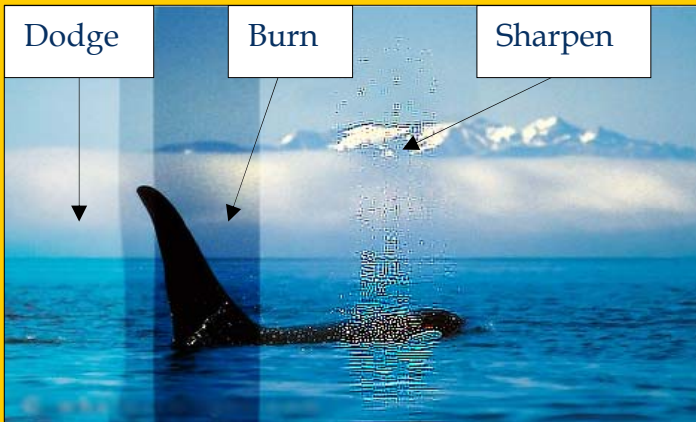
10. Otherwise, drag the Brightness/Contrast arrow bars to the setting of your choice.
11. Adjust the settings to optimize the image.
12. Select OK once your image looks satisfactory.

Your image is now optimized.

Tip:
When checking the contrast within an image, the easiest way to know if it is correct is the whites and blacks within the image contain no gray.



Note: Color balance differs from contrast because it represents how smoothly the pixels flow within the

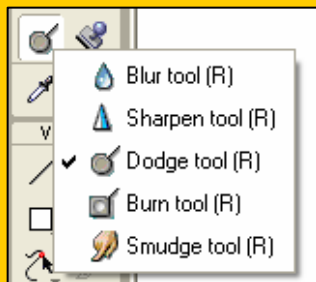


KEY #2

Burn- darkens image and emphasizes color differences.

Dodge- lightens image and lessens noticeable color differences

Sharpen- accentuates detail within an image.



For Additional Help, press F1 to gain assistance.

Burn, Dodge & Sharpen

4. To Burn, Dodge or Sharpen your image, select the appropriate tools in the toolbox.
5. To select the appropriate tool, click and hold the Blur tool.

A dialogue menu displays.

6. Select the tool that you wish to use for your image (refer to key #2 for proper use of tools).
4. In the properties menu located at the bottom of your screen, choose a proper brush size, shape, and intensity for your application.

If you are unsure, experiment with various combinations, keeping in mind the undo button, located under Edit.

