

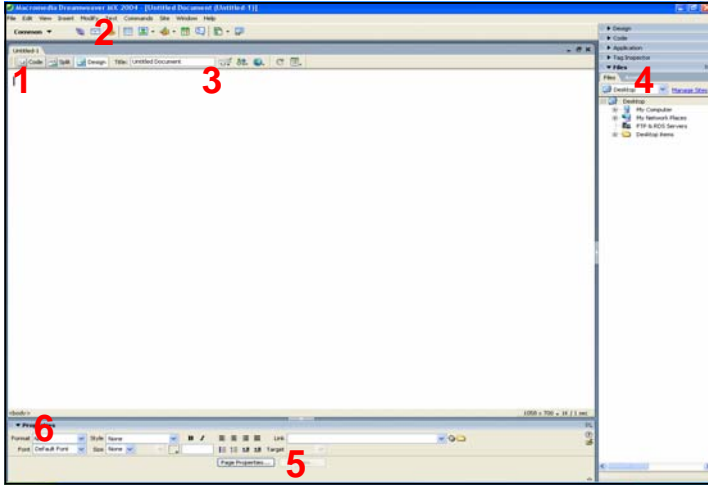
Creating a Basic Web Page in Adobe Dreamweaver MX 2004

Quick Reference Card

Dreamweaver is a web development tool. Dreamweaver uses a number of scripting technologies such as HTML, JavaScript, CSS, etc. The software is available for Mac and Windows.

- 1.) Launch Adobe Dreamweaver.
- 2.) From the menu bar at the top of the page, select File > New. A window appears that is labeled New Document. This box allows you to decide the category of web page you want to create and the syntax coding you want to use.
- 3.) For this Quick reference card you will use HTML syntax. In the New Document window, select Basic Page under Category, and select HTML under Basic Page. Click Create. The initial start page appears. A screen shot image of the initial start page is shown below.

Initial Start Page in Dreamweaver with Important References



Numerical References to Initial Start Page Screen Shot

1. The Code, Split, and Design Buttons allow you to switch between the HTML code pages and the design pages of the web page. The Split button allows you to see both screens at one time.
2. These buttons allow you to add hyperlinks, email links, image links, etc.
3. Properties in this section allow you to title your web page and Preview/Debug the web page in a web browser.
4. This section of the Start Page allows you to access files and documents when creating a web page.
5. The Page Properties button allows you to modify the appearance properties, links, headings, coding, and images on the page.
6. These features contain properties for formatting text.

Creating a Home Page

1. Locate the Title text box to the right of the Code, Split, and Design Buttons. The text box is found in Section 3 of the **Numerical References to Initial Start Page Screen Shot** described above.
2. In the Title text box, create a Title for your home web page.
3. To save the web page, select File > Save As from the menu bar at the top of the page.
4. To add text, begin typing on the blank page. Tip: Dreamweaver is similar to the program Microsoft Word. The blank page can be treated like a word document.
5. To format the size, font, color, etc. of the text, turn the card over and follow the instructions in the section **Add and Format Text to Your Web**.
6. To create and format a background for the web page, find the section on the back of the card titled **Background Colors and Images** for further instructions.
7. To add images and/or graphics to the web page, flip the card over and find the section titled **Inserting Images onto the Web Page** and follow the instructions.

Creating a Secondary Page

1. From the menu bar at the top of the page click File > New. A window labeled New Document appears.
2. In the New Document Window, select Basic Page under Category, and select HTML under Basic Page.
3. Click Create. A tab to access the secondary page, named Untitled 2, appears to the right of the Home Page tab.
4. Click the tab that says Untitled 2.
5. Click in the Title text box found in Section 3 of the **Numerical References to Initial Start Page Screen Shot**, and create a Title for your Secondary Page.
6. Save your secondary page by selecting File > Save As from the menu bar.

Creating a Hyperlink to Secondary Node

1. Return to your Home Page by clicking the tab to the left of your secondary page which you titled in the section **Creating a Home Page**.
2. Click in the blank page.
3. Type a name or phrase of words that you want to use as the title of the Hyperlink linking your Homepage to your Secondary Page.
4. Highlight the name/phrase of words.
5. Locate the button with the chain link icon at the top of the page. It is in Section 2 of the **Numerical References to Initial Start Page Screen Shot**.
6. Click on this button, which is the button for creating Hyperlinks. A Hyperlink Window appears.
7. The name/phrase of words highlighted in Step 4 appears in the Title text box of the Hyperlink window. To link the name/phrase of words on the homepage to the secondary page click on the file icon to the right of the Link drop-down box and find and select the file you saved for your secondary page.
8. Select OK.
9. To preview the web page and the active links in a web browser, follow the instructions on the back of the card titled **Helpful Tips and Links** under the section "Previewing Web Page". You can remain in Dreamweaver and test your hyperlink by right clicking on the link and selecting Open Linked Page.

Background Colors and Images

1. Locate **Page Properties...** button at the bottom of the screen.

Inserting Colors

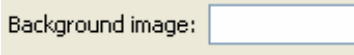
1. Locate color tab.



2. Click on box with arrow.
3. Choose preferred background color from color palette.
3. Preview by running cursor over color.
4. Select color by clicking on color you want.
5. Apply to document by clicking OK at bottom of Page Properties window.

Inserting Images

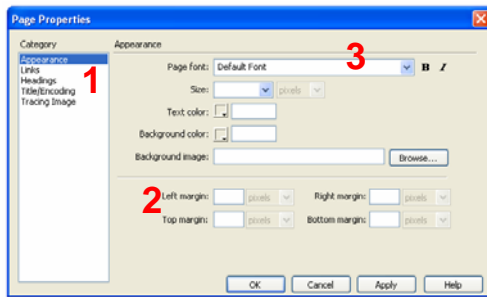
1. Locate image tab.



2. Click **Browse...** to insert a picture from a file.
3. Choose a file to use for your background.
4. Click OK.
5. The URL of your file is in the "Background image" text window.
6. Apply to document by clicking OK at the bottom of the page properties window.

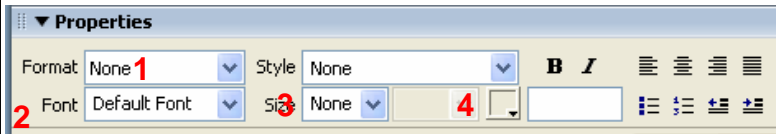
Other Uses in Page Properties window:

1. Manage Links, Headings, Titles, and Images.
2. Adjust Margins.
3. Adjust default text format for entire document.



Formatting Text

1. To add text, type in the blank page.
2. Find the Properties Toolbar at the bottom of the screen.



Formatting Headings

1. Find the section in the toolbar labeled Format, which is number 1 on the Diagram.
2. Click on the dropdown box to select the type of heading you want to use on the web page.

Formatting Font

Note: The default font for Dreamweaver is Times New Roman.

1. Find the section in the Properties toolbar labeled Font, which is number 2 on the Diagram.
2. Click on the dropdown box to select the type of font you want to use for the web page.

Note: Fonts are machine-specific. The fonts are listed in order of importance. The machine will try and use the first font listed. If it does not coincide with the machine, it will move to the next font to find one that works. You can create your own list by selecting Edit Font List.

Formatting Size

1. Find the section in the Properties toolbar labeled Size which is number 2 on the Diagram.
2. Click on the dropdown box to select the size of font you want to use on the web page

Formatting Color

1. Find the box with the arrow in the Properties toolbar which is next to number 4 on the Diagram.
2. Click on the dropdown box to select the font color you want to use for your web page.

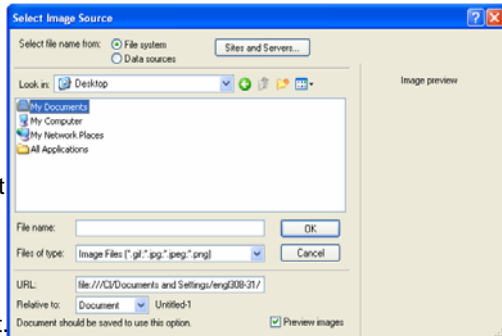
Inserting Images onto Web Page

1. Locate Image button at the top of the screen.



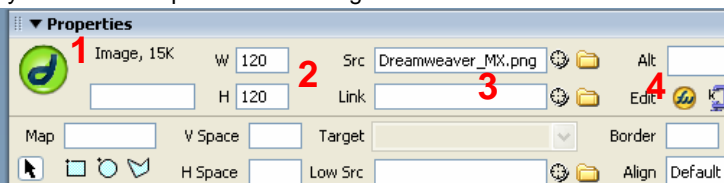
2. Click Image button and select the "IMAGE" option on the pull down menu.

3. Select a file/image to insert onto the page.
4. Click OK to select file you want to use.
5. Image appears in the upper right-hand corner of document.



Formatting Image on Web Page

1. The image below is a thumbnail view of the image you are formatting.
2. Use these two boxes to adjust your image height (H) and width (W).
3. Enter a URL to make the image into a link to another page.
4. If more detailed formatting of your picture is needed, click this yellow icon to open and edit image with Fireworks.



Helpful Tips and Links

Tips

- Dreamweaver is a WYSIWYG interface - "What you see is what you get." The product you see on the screen is what will appear on the finished webpage.
- If you want to "clean up" your code, go to Commands > Clean Up HTML. A Clean Up HTML/XHTML window appears and gives you several options for cleaning code. i.e. clearing up redundancies, fixing things that were imported from other programs, etc.
- If you want to review previous actions you made while creating your web page you can click "History" which is located in the upper right hand corner of the screen.

Previewing Web page



1. Select the button with the world icon in tool bar just above blank page. (It is in Section 5 of the Numerical References to the Initial Start Page Screen Shot on the front of the card.)
2. Click the button with the world icon.
3. Select Preview/Debug in IEXPLORE.

Helpful links & Tutorials:

<http://www.adobe.com/devnet/dreamweaver/php.html>

http://www.joycejevans.com/tutorials/DWtutorials/dwcc_tuts/dwmx_complete_course.html

*You can purchase useful texts on using Dreamweaver as well.

Quick Reference Card **Last Updated May 22, 2007**
Emily Atkinson, Britney Neitenbach, Bianca SantaMaria